

Template

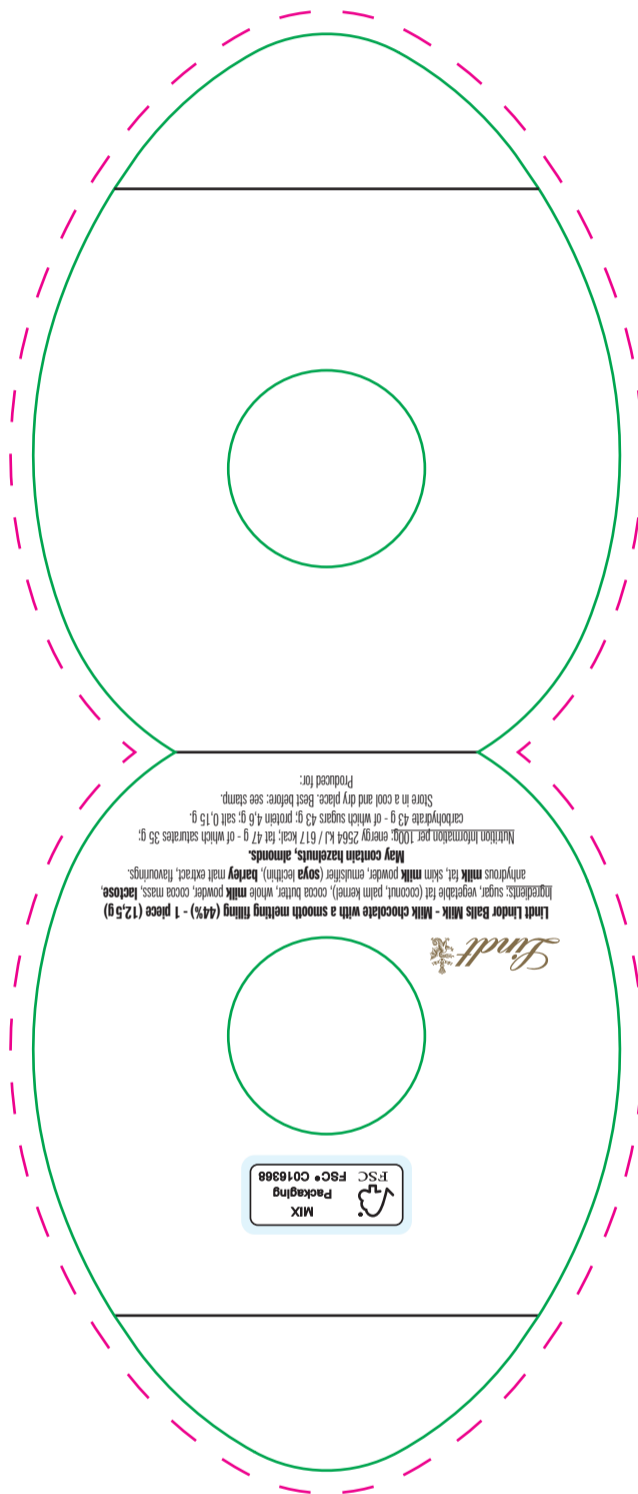
Lindt Lindor Truffle in personalized carton „Easter egg“ (digital printing)

Please create the files with 3mm cut-off!

Size, position and colour of the FSC logo
my not be changed!

77.57

189.98



Ingredients list for dark chocolate (blue ball)

Lindt Lindor Ball Dark - Dark chocolate with a smooth melting filling (44%)
 Ingredients: sugar, cocoa mass, vegetable fat (coconut, palm kernel), cocoa butter, anhydrous milk fat, lactose, skim milk powder, whole milk powder, emulsifier (soya lecithin), flavourings, barley malt extract.
May contain hazelnuts and other nuts.
 Nutrition Information per 100g: energy 2534 kJ / 610 kcal; fat 46 g - of which saturates 35 g; carbohydrate 43 g - of which sugars 41 g; protein 4,2 g; salt 0,05 g.
 Store in a cool and dry place. Best before: see stamp.
 Produced for:

Produced for:
 Store in a cool and dry place. Best before: see stamp.
 carbohydrate 43 g - of which sugars 41 g; protein 4,2 g; salt 0,05 g.
 Nutrition Information per 100g: energy 2534 kJ / 610 kcal; fat 46 g - of which saturates 35 g;
May contain hazelnuts, almonds.
 anhydrous milk fat, skim milk powder, emulsifier (soya lecithin), barley malt extract, flavourings.
 Ingredients: sugar, vegetable fat (coconut, palm kernel), cocoa butter, whole milk powder, cocoa mass, lactose,
 Lindt Lindor Balls Milk - Milk chocolate with a smooth melting filling (44%) - 1 piece (1,25g)



	<p>The files have preferably been created with Adobe Illustrator (CC), Adobe InDesign (CC) or Adobe Photoshop (CC).</p>
	<p>Images should have a resolution of at least 300 dpi, logos and other objects of at least 1200 dpi. The best results are achieved with vectorized files. Vectorize all fonts or provide all fonts used (for PC).</p>
	<p>Indicate as CMYK (4c Euroscale). No RGB!</p>
	<p>Since December 13, 2014 the rules of EU-regulation 1169/2011 concerning the Food Information Regulation (LMIV) have to be observed. This regulation includes the ingredients list, the labeling of allergens, the product name (within the visual area), the net quantity (within the visual area), the best before date as well as the full name and address of the distributor. All legal requirements have to be printed clearly and readably with a minimum font size of 1,2 mm related to the letter "x". As soon as the maximum surface area of the packaging is less than 80 cm², the minimum font size is 0,9 mm. Concerning smallest packaging - that is less than 10 cm² for the maximum surface area - only the most important legal requirements (such as the product name, the net quantity, the best before date) have to be mentioned - however in the font size of 0,9 mm related to the small x.</p>